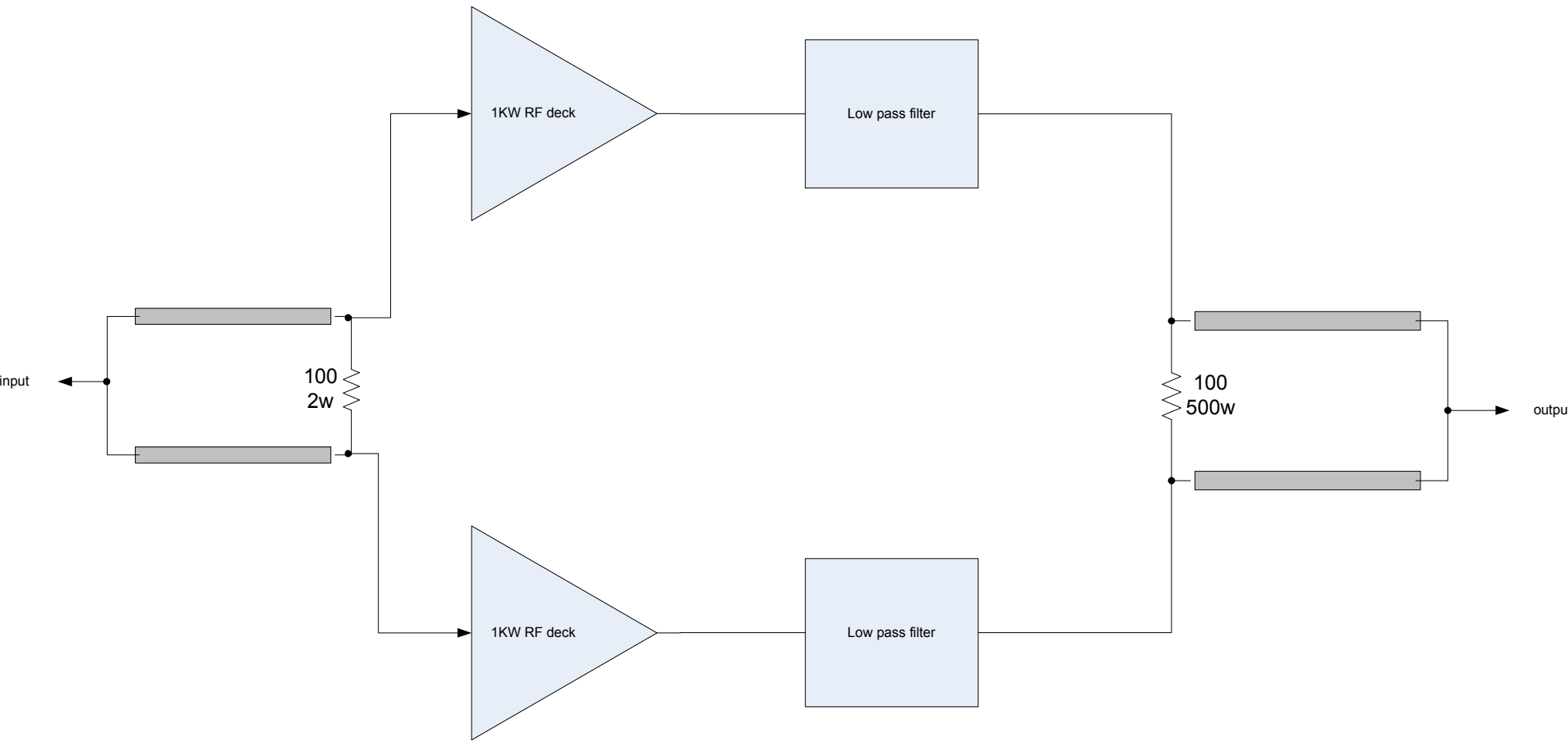
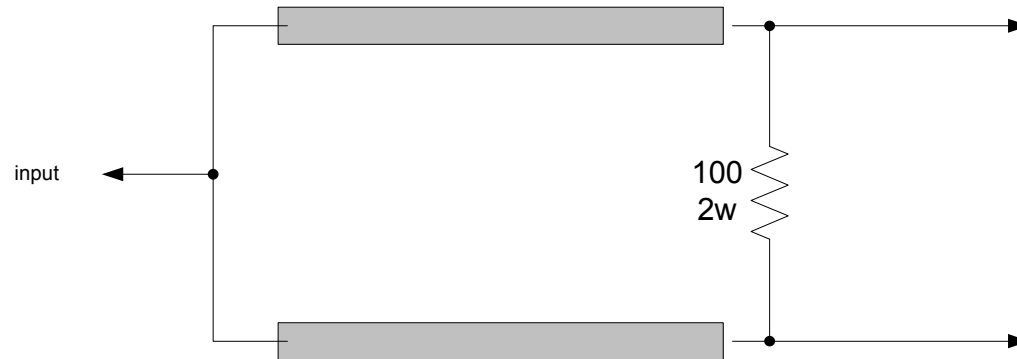


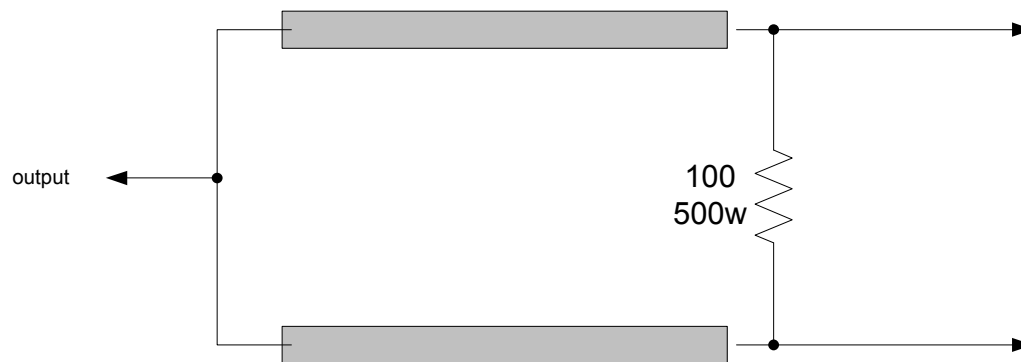
2 KW RF DECK

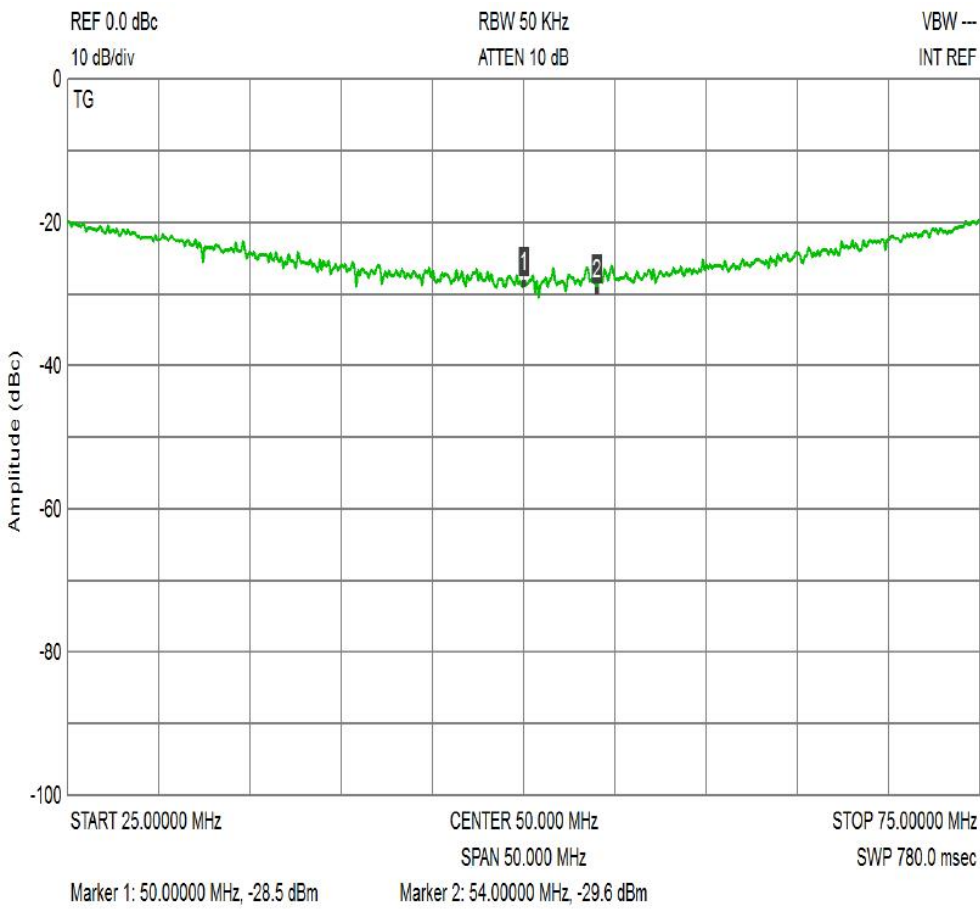


Input power splitter is a Wilkinson made from 75 ohm .090 Teflon coax

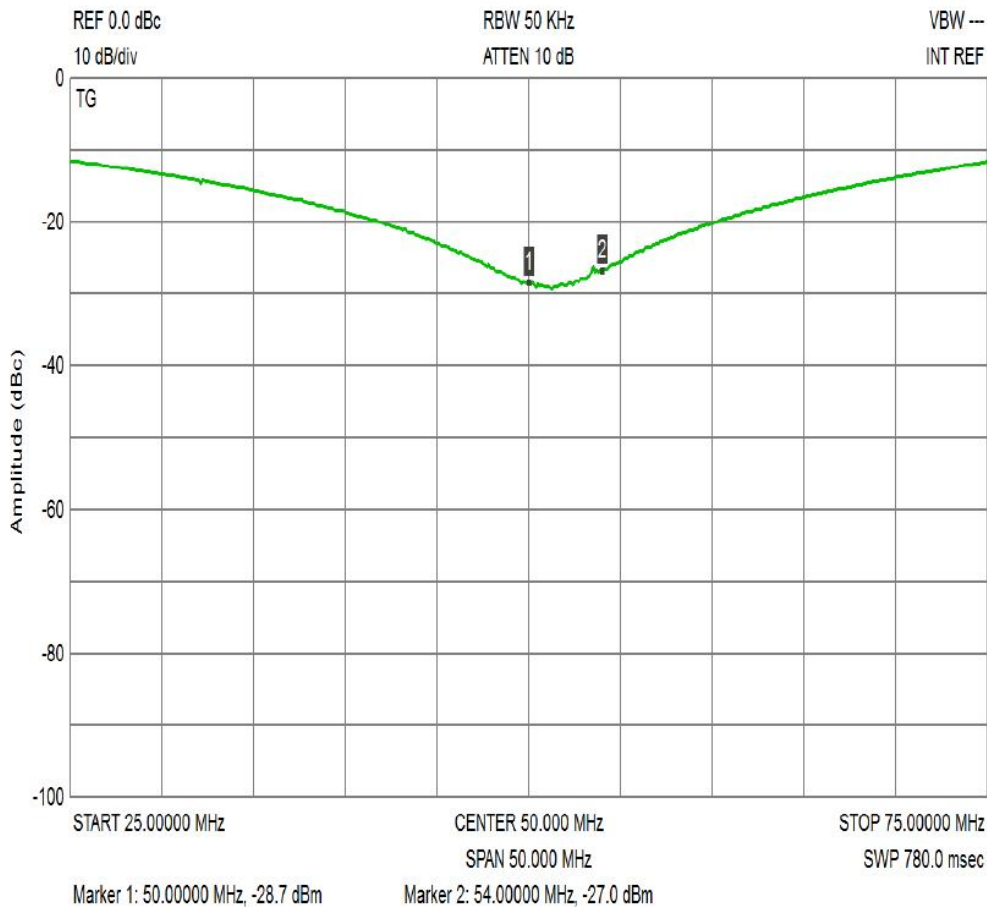


output power combiner is a Wilkinson made from 75 ohm .141-75 Teflon coax



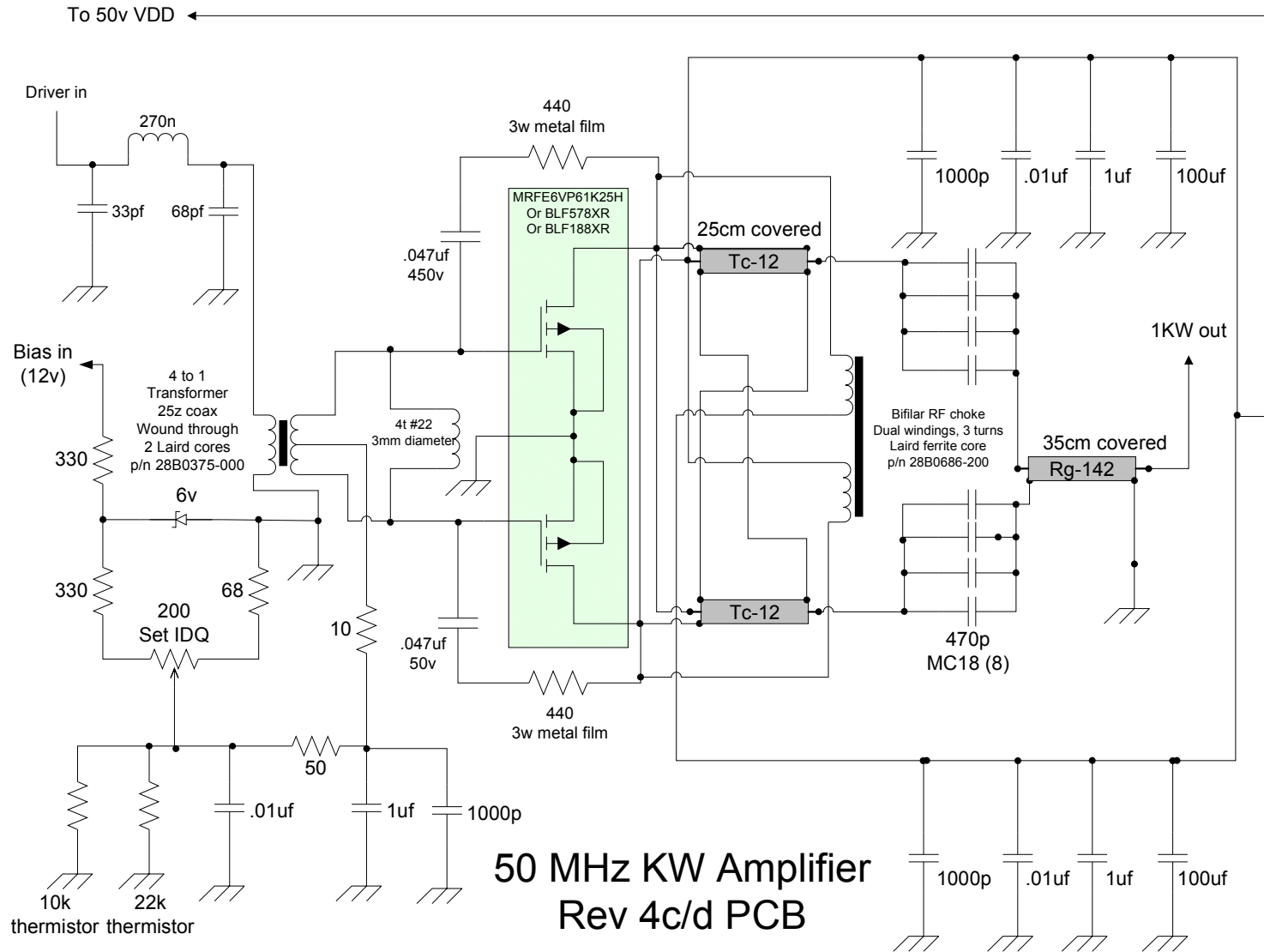


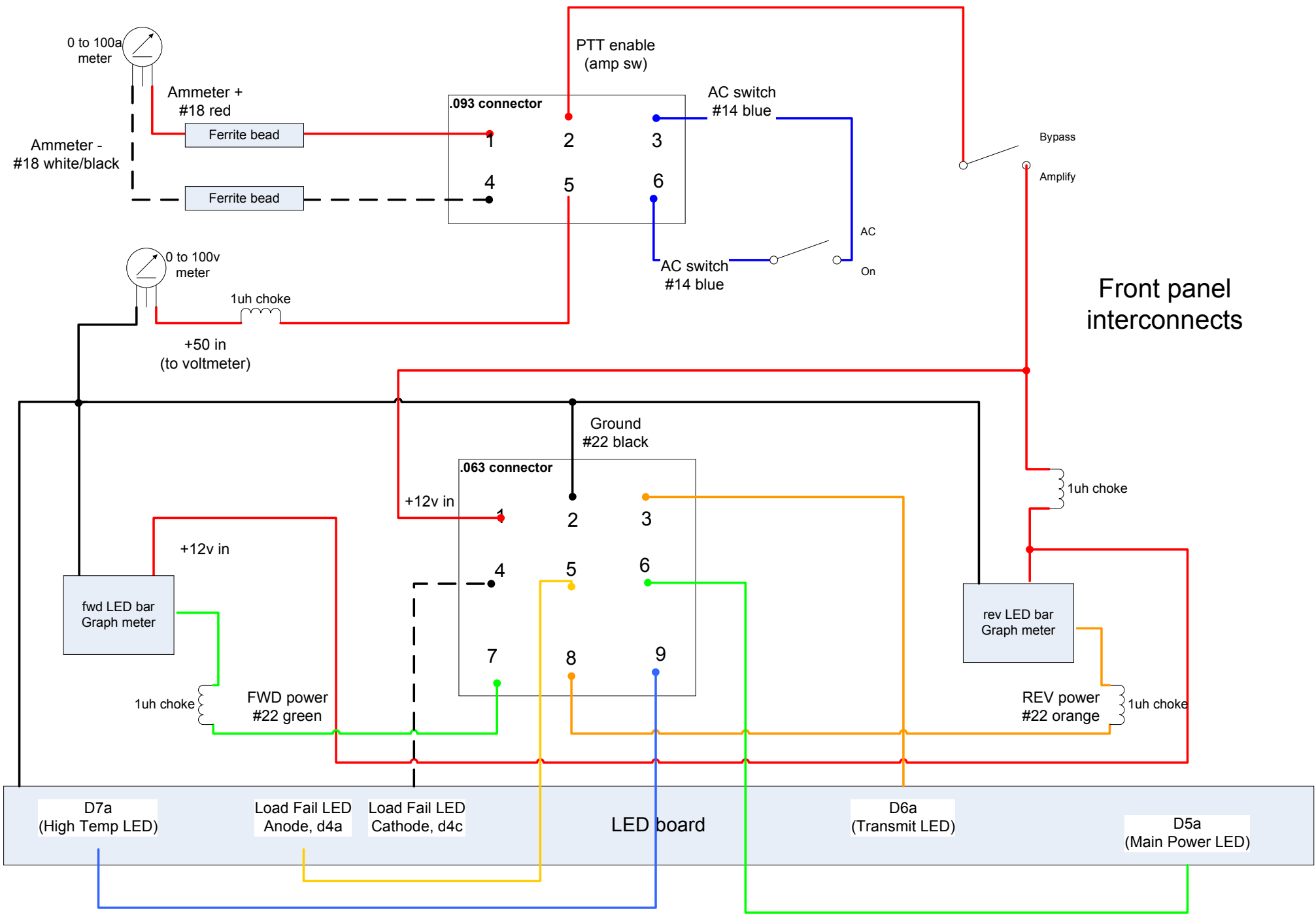
Wilkinson combiner performance (return loss)

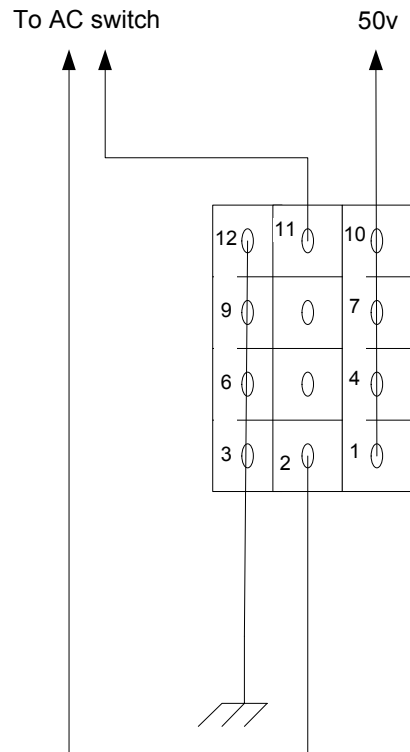


Wilkinson combiner performance (isolation)

1KW RF deck (two are used)







Main Power connector

Note: all non-ground pins are each bypassed with a 1000p or 470p ceramic capacitor

Pins 5 and 8 are not used